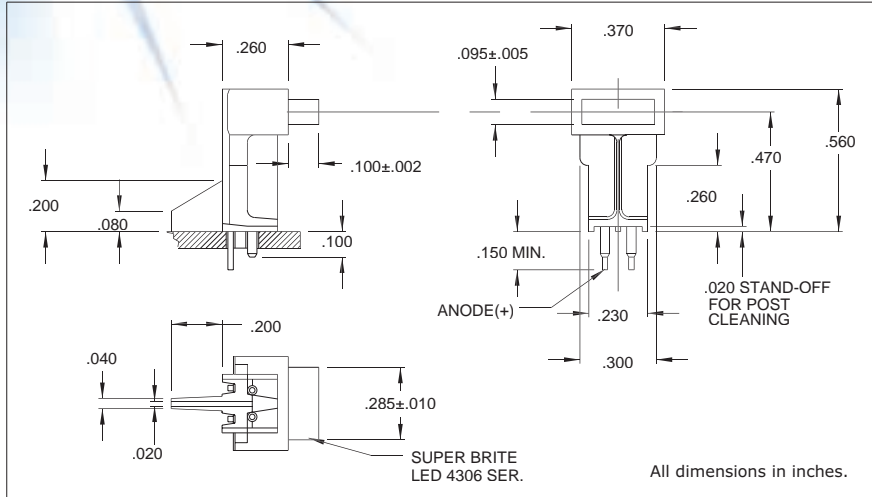


**5620 Series Rectangular Right Angle LED Assembly**

**DESCRIPTION AND FEATURES**



- Features**
- Block mounting design assures height and side-by-side spacing.
  - Large 2.4mm x 7.3mm flat LED face has even light distribution.
  - High light intensity output-ideal for back lighting legends.
  - Holding/press-in pins secure block to board while being soldered.
  - Standoffs prevent flux entrapment.

Housing: Black Nylon, UL94V-O  
 Mounting hole pattern on page 1-X7.

**ELECTRO-OPTICAL CHARACTERISTICS AND RATINGS**

Part Number	Emitted Color	Typical Intensity (mcd)	Rated Current (mA)	Continuous Forward Current Max. (mA)	Forward Voltage		Reverse Breakdown Voltage Min. (V)	Peak Wavelength (nm)
					Typ. (V)	Max. (V)		
5620R1	Red	5	20	30	2.1	3.0	5	635
5620R5	Green	3	20	30	2.3	3.0	5	565
5620R7	Yellow	5	20	20	2.2	3.0	5	585